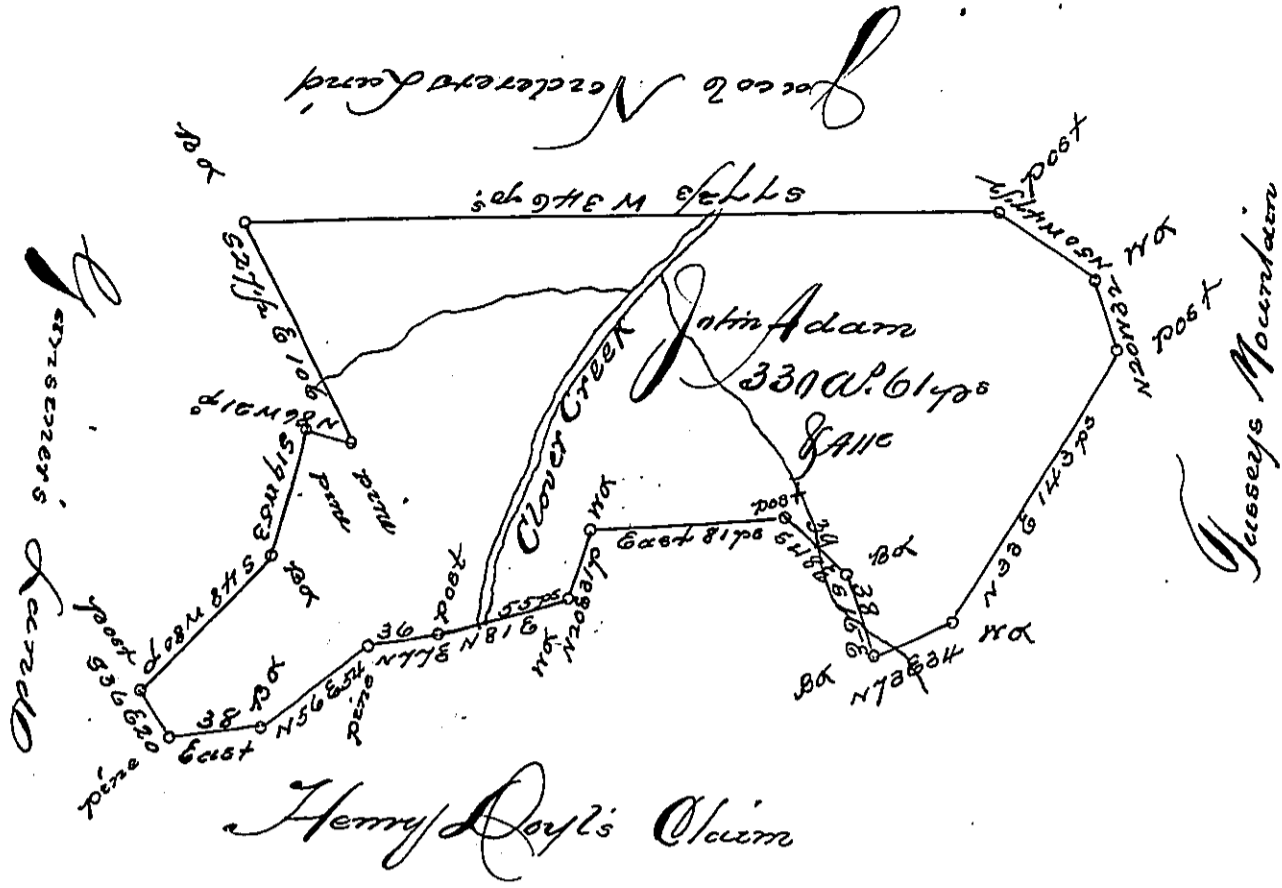


Pg 162



Situated on Clover Creek in Morrisons Cove, Woodberry Township
 Bedford County, Containing three hundred and thirty acres &
 sixty one perches with the usual allowance of six feet for
 Roads &c. Surveyed May 19th 1792. In pursuance of a war-
 rant granted to John Adam dated April 9th 1792.

George Woods Junr. D. J.
 Daniel Brodhead Esqr.
 D. J.

IN TESTIMONY that the above is a copy of the original remaining on file in
 the Department of Internal Affairs of Pennsylvania, made
 conformably to an Act of Assembly approved the 16th day of
 February, 1833, I have hereunto set my Hand and caused
 the Seal of said Department to be affixed at Harrisburg,
 this sixth day of May 1902,

James W. Linn
 Secretary of Internal Affairs.